

MAXIMA

mulmix
EXPERIENCE

MAXIMA
HEAVY DUTY



Mulmix
Industrial Engineering,
the HD experience.



Dear all,

I am very glad to present our new division: MAXIMA HD, dedicated to the heavy duty industry.

These machines have a stronger structure and fulfill the high standards demanded in this sector; they can be customized and equipped with different options to propose the customer a "tailor made" solution.

Nicola Lorenzo Finco
Chairman

*"History is a great present
not only a forgotten past."*

(Émile-Auguste Chartier)
Les aventures du coeur, 1945

The experience Mulmix gained during the years in the planning of more and more diversified plants with increased conveying capacity, led to the creation of the MAXIMA HD series. These machines are meant for intense use and capacities up to 1600 m³/h.



MAXIMA

HD

These Maxima HD series is manufactured according to the 2006/42/CE Directive and can also be supplied in conformity with the ATEX Directive, suitable for the environment in which they will be installed. We can also include Active/Passive protection systems against explosion.





MAXIMA Heavy Duty Machines - MULMIX



Only the highest standards.



BUCKET ELEVATORS

The Maxima series bucket elevators have nominal capacities up to 1600 m³/h. The belt speed can be set up to 3.2 m/s.

We can supply PEHD, nylon or steel buckets.

Removable anti-wearing covering on the head and on the feeding studs (available in PEHD or anti-wearing steel).

Anti-oil anti-static belt.

Driving wheel with detachable rubber sectors.

Inspection doors on the foot and on the head.

Possibility to add some magnets on the inlet of the elevator.

Anti-clogging sensors, anti-skid, revolution control and temperature control of bearings.

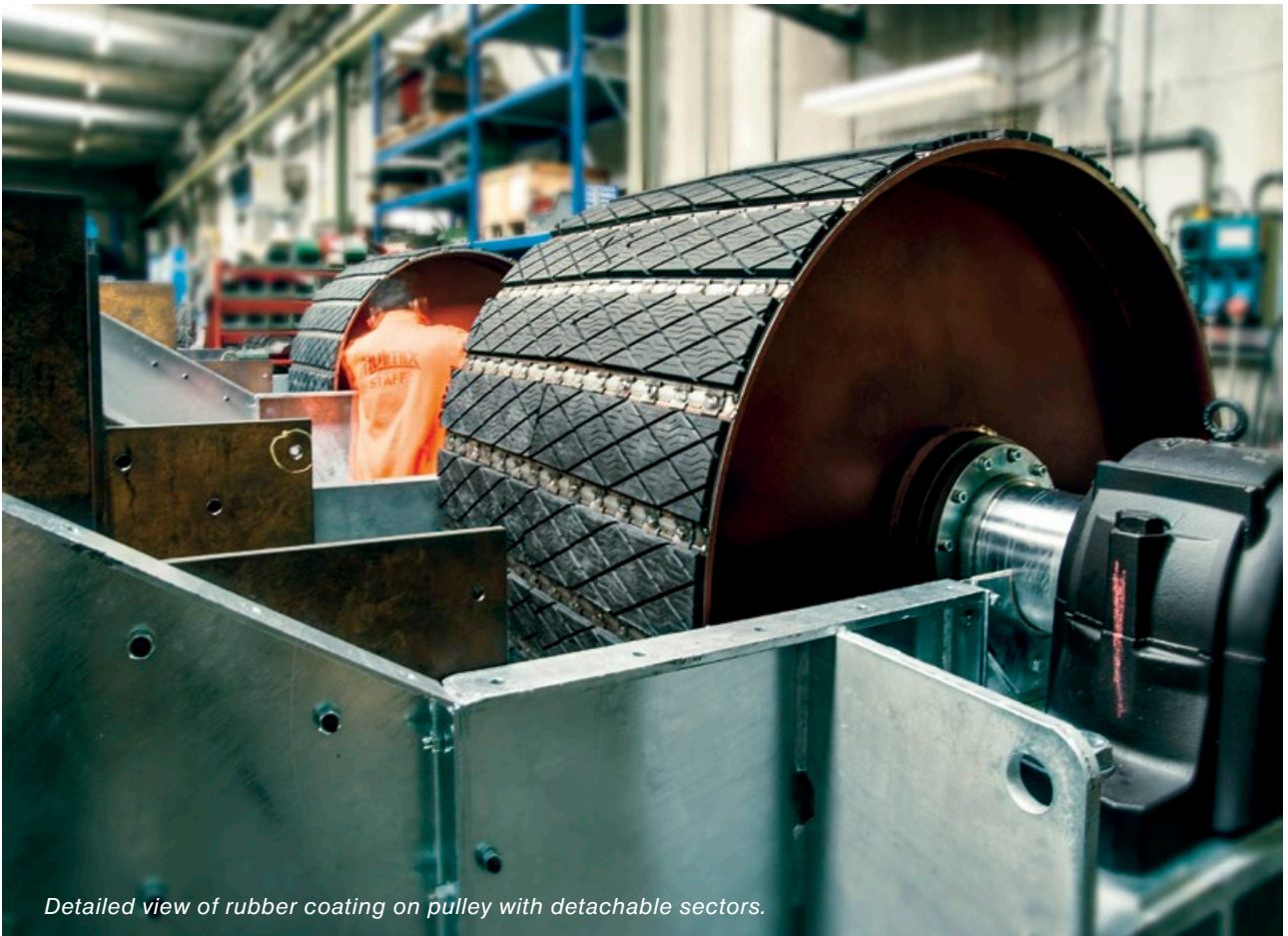


Pulley on head Ø mm 1250.



Hardox anti-wearing covering

MAXIMA
HD



Detailed view of rubber coating on pulley with detachable sectors.



Head structure of MX ET 125-70



BELT CONVEYORS

The Maxima HD belt conveyors have nominal capacities up to 1600 m³/h.

The belt speed can be set up to 3 m/s and have maximum width of 1600 mm.

Anti-oil and anti-static belt.

They are equipped with upper triple rollers and they can be used for inclined conveying up to 10°.

Automatic tensioning system.

1 or 2 ways reversible trolleys.

Anti-clogging sensors, anti-skid, revolution control and temperature control of bearings.



Detailed view of triple rollers



MX TN-800 with 6° inclination

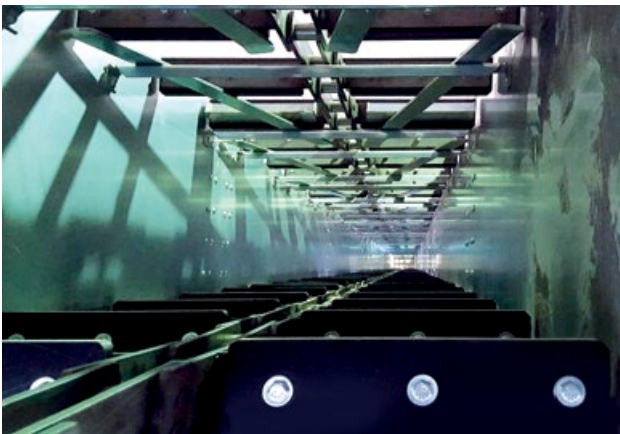
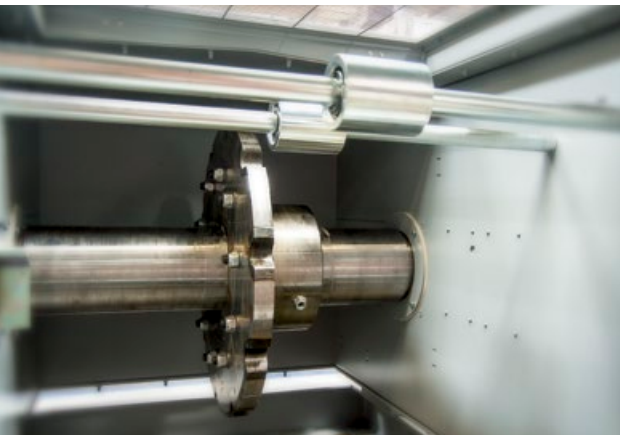


Anti-oil and anti-static belt mm 800.

MAXIMA
HD



MX TC 52-49 with direct motorisation



Pads and upper chain glides

CHAIN CONVEYORS

The Maxima series chain conveyors have nominal capacities up to 800 m³/h. The nominal speed is lower than 8 m/s.

The conveying is performed with a scraper chain gliding on PEHD tracks or with UHDPE scrapers for a complete cleaning of the bottom.

Detachable driving wheel for easy maintenance.

Direct motorization with orthogonal axes gearbox or with transmission joint [possible customization with industrial gearbox on separated motor support with double joint – fast shaft – slow shaft and independent system for manual alignment of the ensemble].

Possibility to insert curves for inclined conveying up to 11°.

The machine is equipped with anti-clogging sensors with different settings and compact revolution control.

These machines can be supplied with galvanized, varnished or in stainless steel.



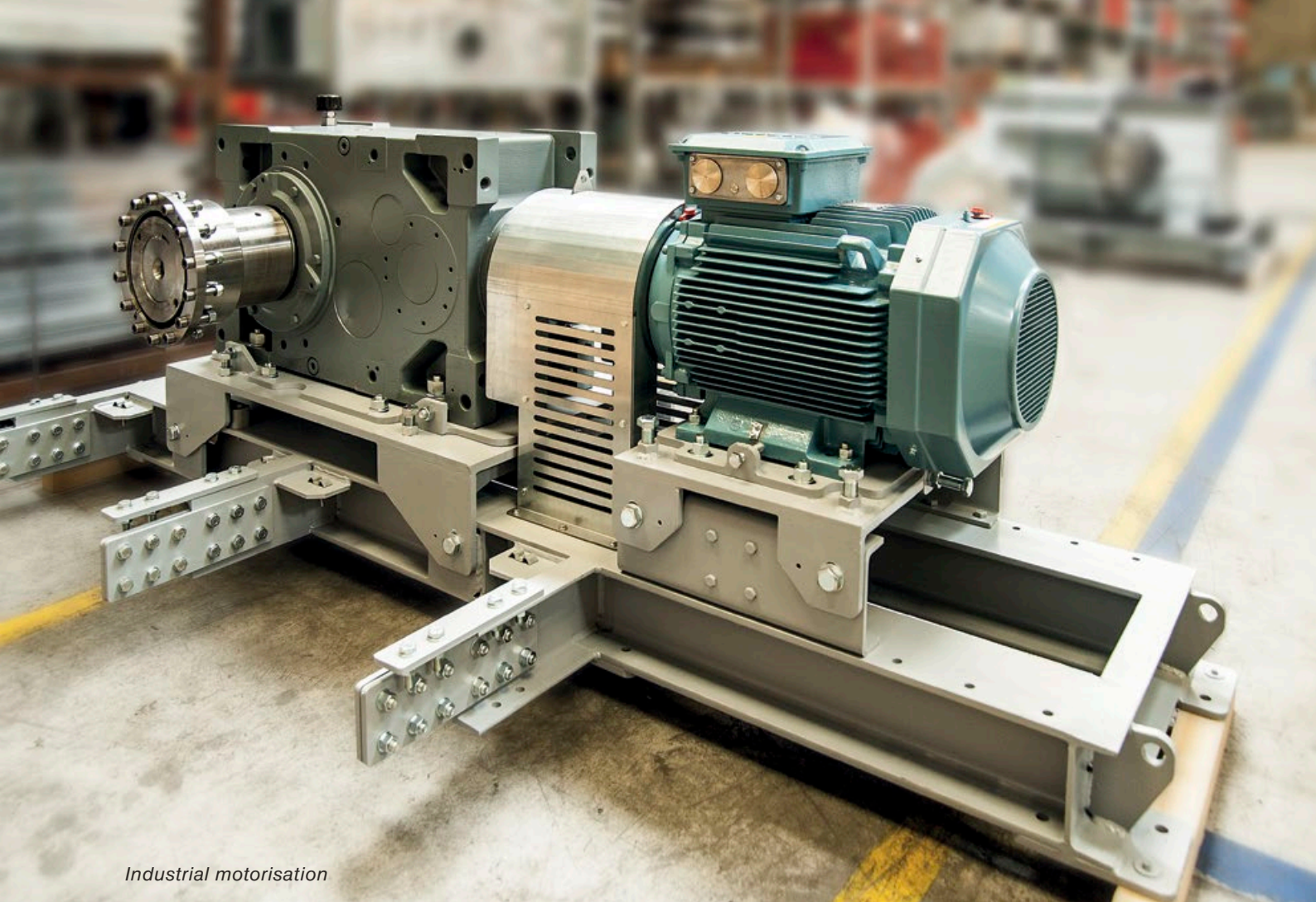
UNLOADING SHUTTERS

They are special shutters for the compact pneumatic or motorized unloading of products from redlers.

They are equipped with manual or automatic brush for the correct removal or residual products sticking on the chain.



Detailed view of unloading shutter



Industrial motorisation



MX TC 65-88

CHAIN CONVEYORS COBRA “J” TYPE

These chain conveyors are designed to perform inclined conveying up to 55°.

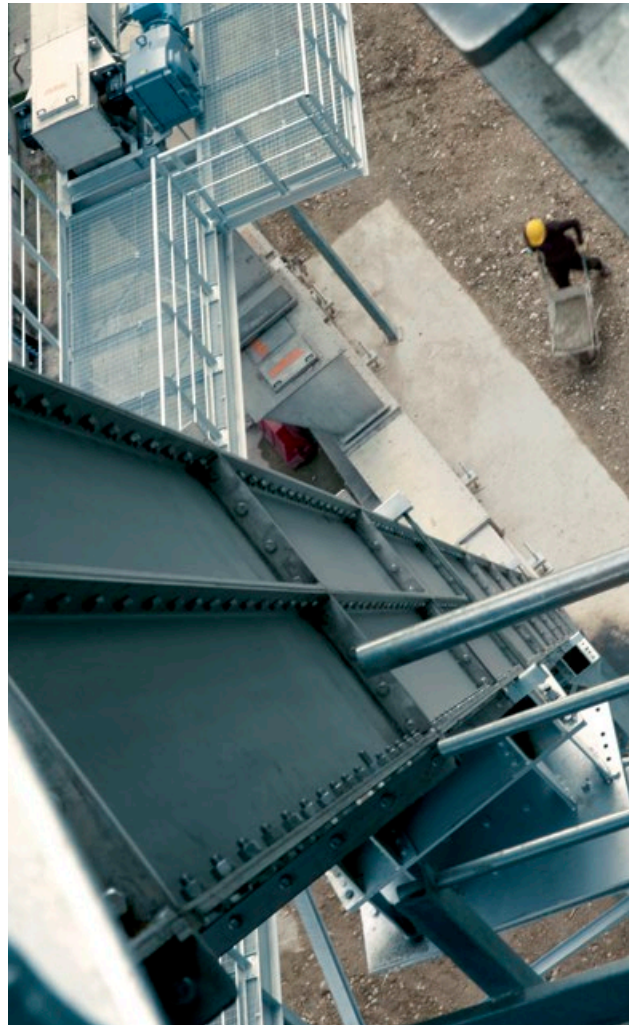
The conveying is performed with a scraper chain gliding on PEHD tracks or with UHDPE scrapers for a complete cleaning of the bottom.

The machine is equipped with anti-clogging sensors with different settings and compact revolution control.

These machines can be supplied with galvanized, varnished or in stainless steel.



Stainless Steel MX TP 52-73



MAXIMA
HD

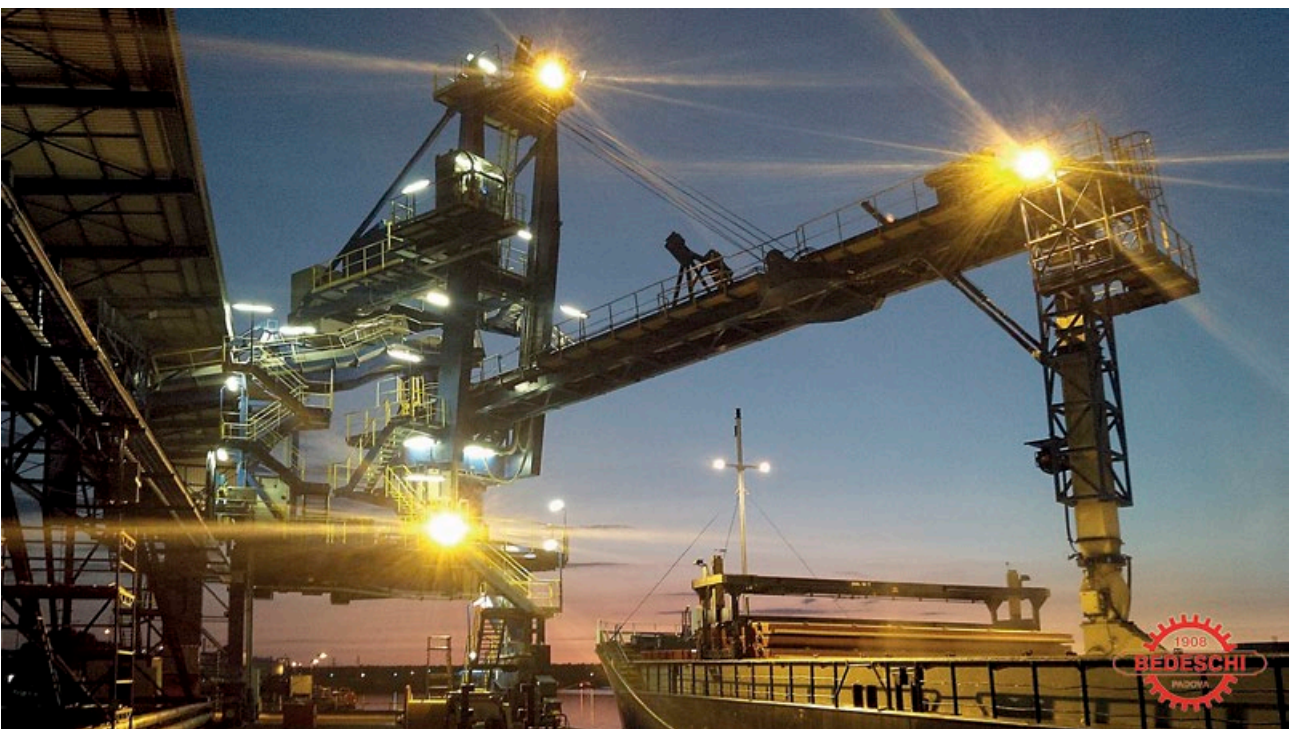
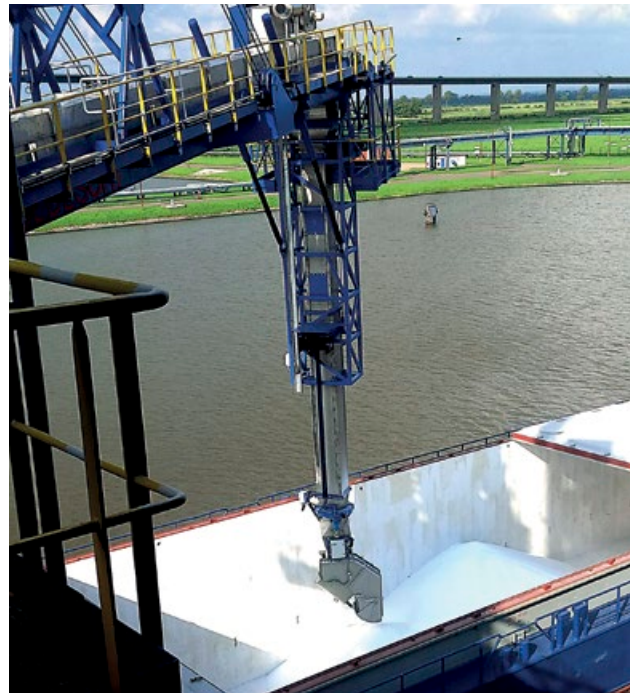


*Detailed view
of product loading*

TRANSSHIPMENT

Our experience is moving towards the manufacturing and the designing of plants and machinery for handling of bulk material. One of our main focus is the ship loaders plants, with a wide set of Shiploaders, therefore we are aiming to become an international leader in this high skilled field of application.

Close to the classic technology with loading boom, rubber belt conveyor and telescopic chute, we are developing a new technology with complementary screw conveyor and telescopic chute as to obtain a close and sealed system environmentally friendly.



MAXIMA HD



BEDESCHI

BEDESCHI

*Nicola Corrado Finco
Chairman*

MAXIMA Heavy Duty Machines - ALL MIX





Designed and customized
to win against time.



HEAVY DUTY



INDUSTRIAL



STORAGE



FEED



SEEDS



mulmix.it



contact us

The company is certified:



© All rights reserved - Trademarks, names and images are the property of MULMIX S.p.A.
All unauthorized full or partial reproduction is strictly prohibited.
The company reserves the right to make technical and stylistic changes without public notice.

MULMIX SpA. Italia
Via Palladio 7 | 35010 Campo San Martino (PD)



T. +39 049 9638211 | F. +39 049 9630511
mulmix@mulmix.info | www.mulmix.it